

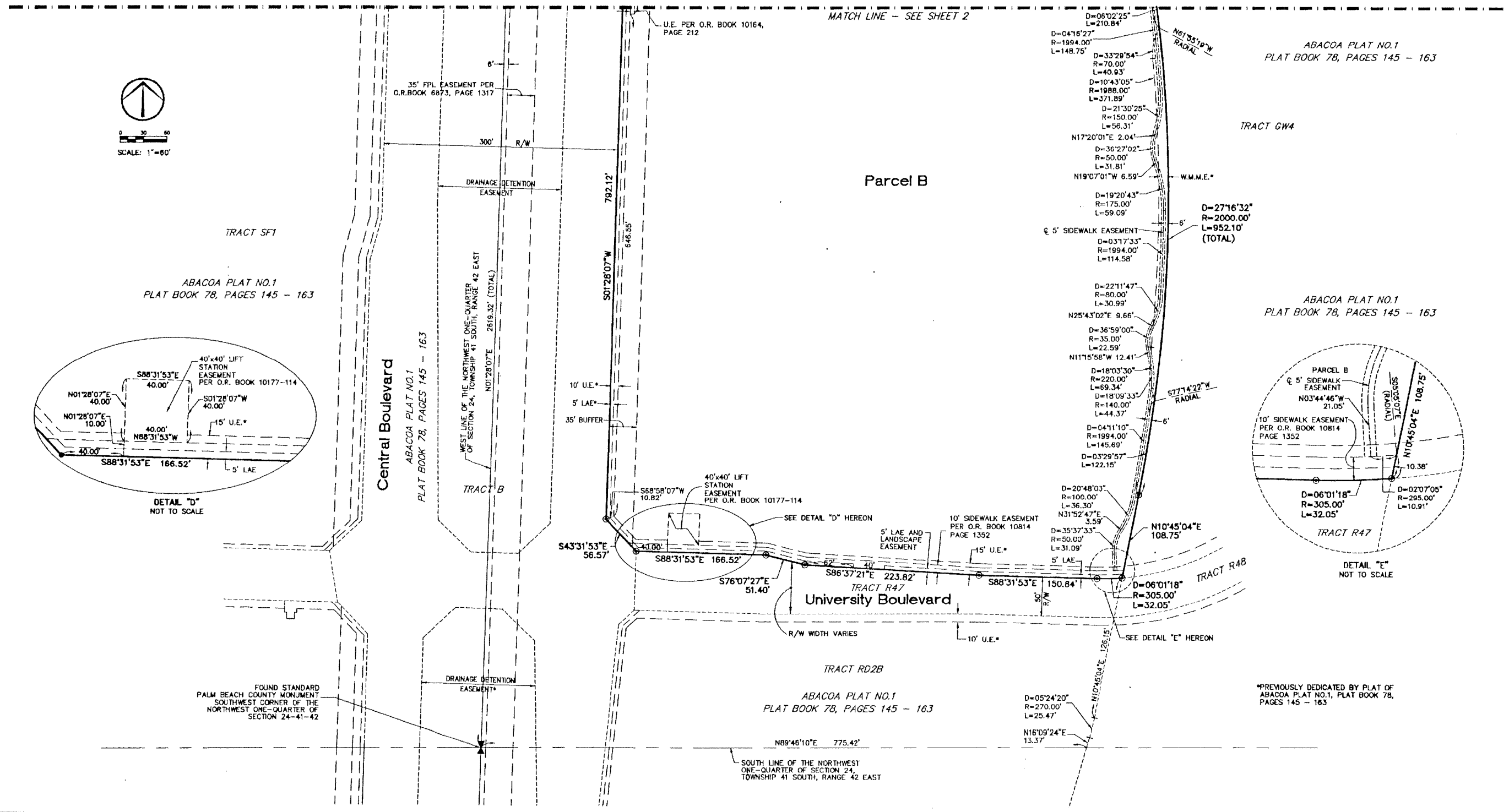
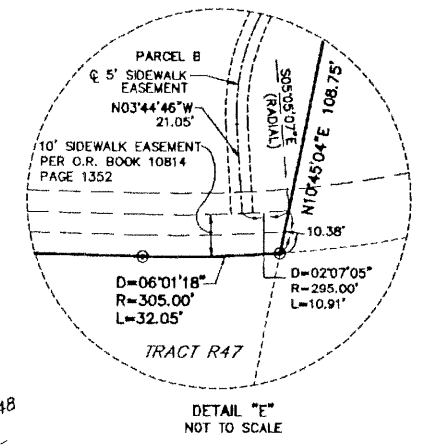
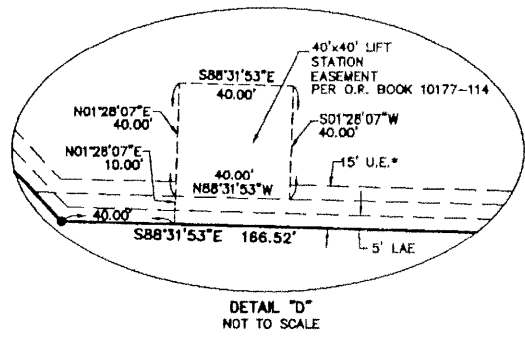
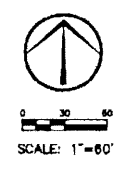
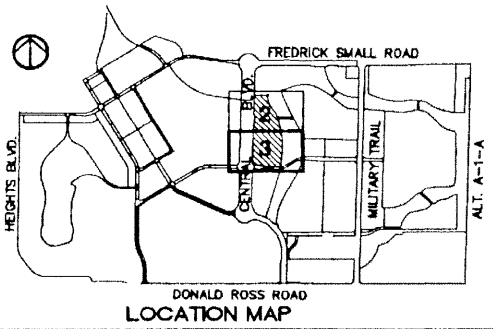
# ABACOA - REPLAT OF TRACT RD2A

A Replat of Tract RD2A of Abacoa Plat No. 1, as recorded in Plat Book 78, Pages 145 through 163, inclusive of the Public Records of Palm Beach County, Florida, lying in Section 24, Township 41 South, Range 42 East Town of Jupiter, Palm Beach County, Florida

This Instrument prepared by James E. Park, P.S.M.  
Williams, Hatfield & Stoner, Inc. - Engineers Surveyors Planners Environmental Scientists  
1901 South Congress Avenue, Suite 150, Boynton Beach, Florida 33426

December 2000

Sheet 3 of 3



FOUND STANDARD PALM BEACH COUNTY MONUMENT SOUTHWEST CORNER OF THE NORTHWEST ONE-QUARTER OF SECTION 24-41-42

\*PREVIOUSLY DEDICATED BY PLAT OF ABACOA PLAT NO.1, PLAT BOOK 78, PAGES 145 - 163